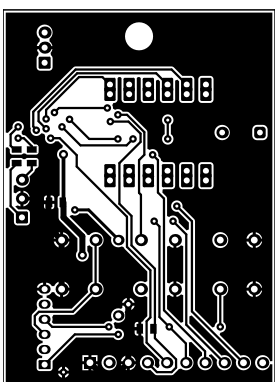
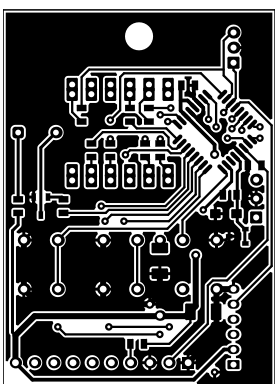
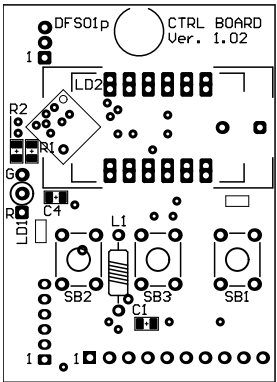
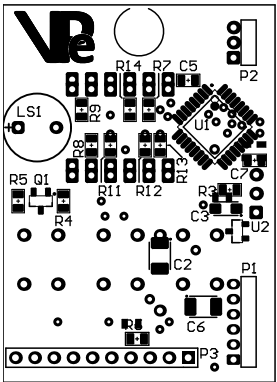


Title		
Size	Number	Revision
A4		1.00
Date:	05.10.2016	Sheet of
File:	D:\Documents\...\DFS01p_CB_v1.0x.Sch	Drawn By: Victor Poteraylo









Value	Comment	Designator	Description	Footprint	Quantity
100nF	Cap Semi	C1, C4, C5, C7	Capacitor (Semiconductor SIM Model)	C0805	4
10uF	10-16V	C2	Tantamount Commercial, Surface Mount Solid Tantalum Chip Capacitor for Switch Mode Power Supplies and Converters: 4.7uF, 20% Tolerance, 20 WVDC @ +85°C, Surge = 26V	Cap Tantall SMD B	1
4.7uF	10V	C3	Tantamount Commercial, Surface Mount Solid Tantalum Chip Capacitor for Switch Mode Power Supplies and Converters: 4.7uF, 20% Tolerance, 20 WVDC @ +85°C, Surge = 26V	Cap Tantall SMD A	1
47uF	10V	C6	Tantamount Commercial, Surface Mount Solid Tantalum Chip Capacitor: 15uF, 20% Tolerance, 4 WVDC @ +85°C, Surge = 5.2V	Cap Tantall SMD B	1
10nF	Cap Semi	C?	Capacitor (Semiconductor SIM Model)	C0805	1
100uH	Drossel	L1		Inductor AXIAL 0.4	1
	LED2C	LD1		LED 2 Color 3mm	1
	BT-M40DRD	LD2	CC 3Bit Digital 7 segment 0.28" Red LED Display	3x7LED_32640_c ombo	1
	Buzzer	LS1	Electrical Bell	Buzzer 9x5.5	1
	ISP	P1	Header, 6-Pin	HEADER x6 2mm - H	1
	UART	P2	Header, 3-Pin, Right Angle	HEADER x3 2mm - H	1
	MB Connect	P3	Header, 10-Pin	Conn PLS-10	1
	BC846B	Q1	BC846B	SOT23-3_N	1
510	Res Semi	R1, R3	Semiconductor Resistor, Resistor	R0805	2
680	Res Semi	R2, R7, R8, R9, R11, R12, R13, R14	Semiconductor Resistor	R0805	8
10K	Res Semi	R4	Semiconductor Resistor	R0805	1
39	Res Semi	R5	Semiconductor Resistor	R0805	1
4.7K	Res Semi	R6, R?	Semiconductor Resistor	R0805	2
	PLUS	SB1		Button	1
	MINUS	SB2		Button	1
	SEL/OK	SB3		Button	1
	ATmega168PA-AU	U1	8-bit AVR Microcontroller, 16KB Flash, 512 Bytes EEPROM, 1KB SRAM, 32-pin TQFP, Industrial Grade (-40°C to 85°C)	TQFP32 (32A_N)	1
	TL431A(B)CDBZR	U2		SOT23 (tl431)	1